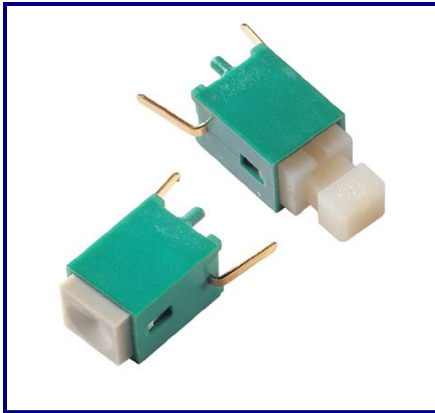


# NON ILLUMINATED SWITCHES

## TP 6x6mm SERIES: MINIATURE PUSH SWITCH



### FEATURES

- Momentary switch action
- 6mm square
- Rubber contacts for 'soft click' switching
- Vertical or horizontal operation
- Knob or flush actuators
- 6 button colours

### DESCRIPTION

The TP6x6 series of six ultra miniature, PCB mounted pushbutton switches is designed for high reliability. The contacts are insert moulded to prevent ingress of flux and ensure reliable flow-solder assembly. Versions of the switch have either horizontal or vertical operation with a knob or flush actuator. Two knob styles are available in a range of six colours. These switches are particularly suitable for applications that demand that minimal space is taken by switch. A simplified operating mechanism and low current requirement ensure high reliability.

### SPECIFICATIONS

#### Electrical

Rating	12V DC 20mA
Contact Resistance	1k $\Omega$ max
Insulation Resistance	1000M $\Omega$ min @ 100V DC
Dielectric Strength	150V AC for 1 minute

#### Soldering

Soldering must be performed within 3 seconds by dipping into solder bath of 270°C or with a 30W soldering iron

#### Mechanical

Operating Life	100,000 operations
Operating Temperature	-20°C to +70°C
Operating Force	0.9N +/- 0.3N

### ORDERING INFORMATION

**TP**  
Series Code

**2xx1**

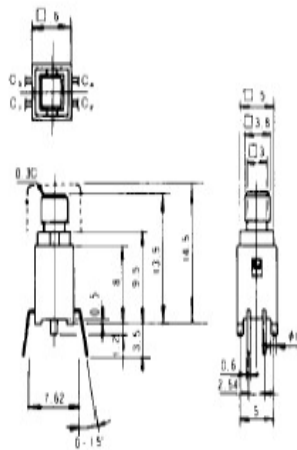
Code	Actuator	Direction of Operation	Terminals
2101	Knob Type	Vertical	4
2301	Knob Type	Vertical	2
2801	Knob Type	Horizontal	2
2201	Flat Type	Vertical	4
2401	Flat Type	Vertical	2
2901	Flat Type	Horizontal	2

# NON ILLUMINATED SWITCHES

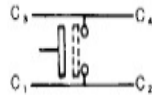
## TP 6x6mm SERIES: MINIATURE PUSHSWITCH

### DIMENSIONS

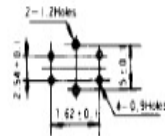
TP2101 - Verticle 4 Terminal Knob Fitting



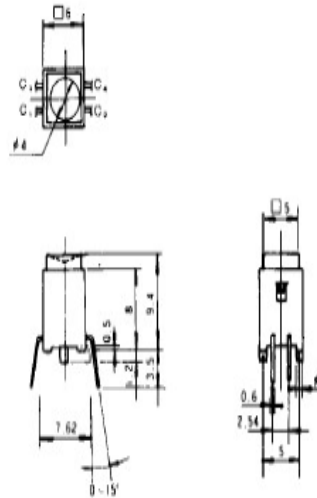
Circuit diagram



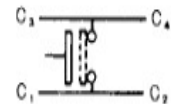
P.C. board mounting hole dimensions



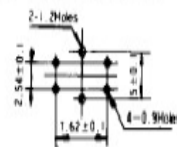
TP2201 - Verticle 4 Terminal Flush Fitting



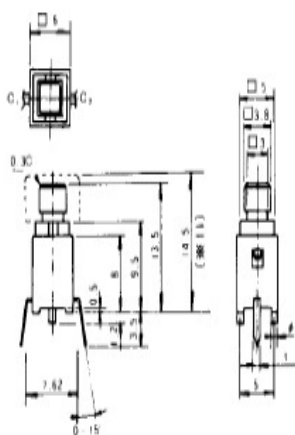
Circuit diagram



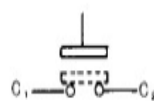
P.C. board mounting hole dimensions



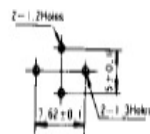
TP2301 - Verticle 2 Terminal Knob Fitting



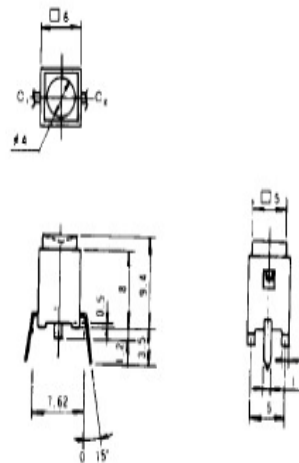
Circuit diagram



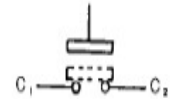
P.C. board mounting hole dimensions



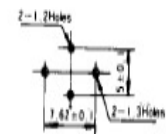
TP2401 - Verticle 2 Terminal Flush Fitting



Circuit diagram



P.C. board mounting hole dimensions

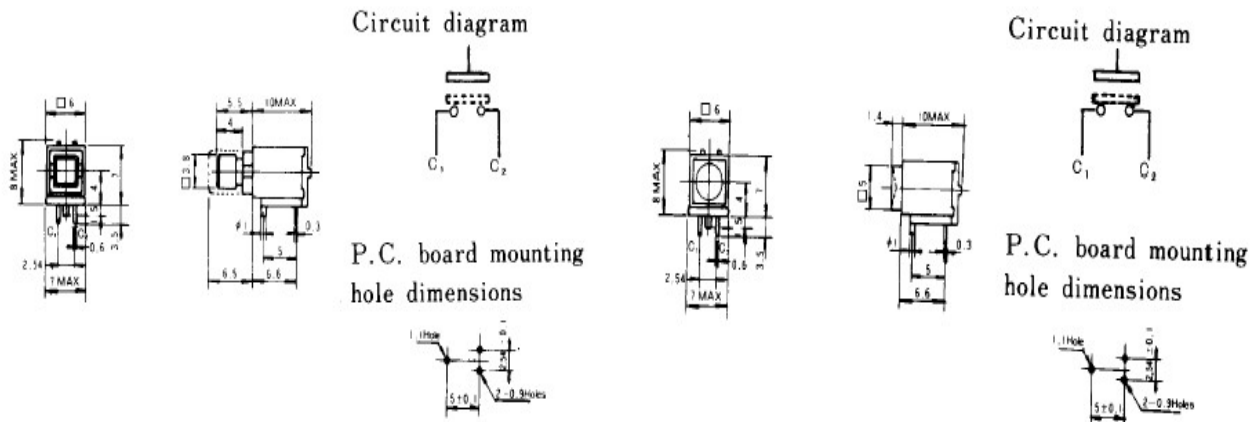


All measurements are in mm. Tolerance +/- 0.3mm unless shown. This leaflet is believed to contain the best information at time of printing, but is subject to change without notice.

# NON ILLUMINATED SWITCHES

## TP2801 - Horizontal 2 Terminal Knob Fitting

## TP2901 - Horizontal 2 Terminal Flush Fitting



Optional Button E	Order Code	Colour	Option Button F	Order Code	Colour
	E101	Red		F101	Red
	E201	Ivory		F201	Ivory
	E401	Blue		F401	Blue
	E951	Grey		F951	Grey
	E911	Black		F911	Black
	E991	White		F991	White



Devlin Electronics Limited, Unit D1, Grafton Way, Basingstoke, Hants, RG22 6HZ, England