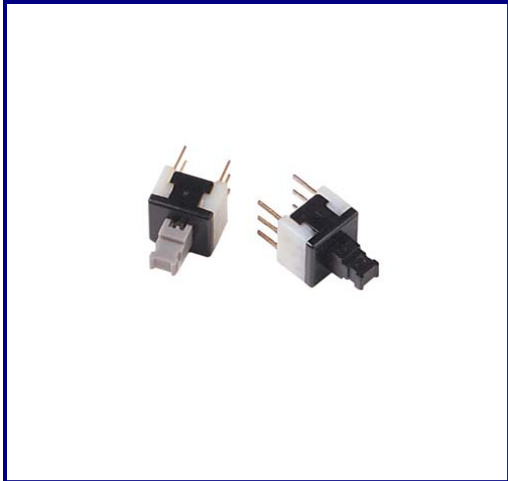


# NON ILLUMINATED SWITCHES

## PS 150 SERIES: MINIATURE PUSHBUTTON SWITCHES



### FEATURES

- Low profile
- Alternate or momentary action
- PCB mounting – 2.5mm pitch
- Double pole single throw contact arrangement
- Range of moulded knobs available in various colours
- Suitable for instrumentation, professional audio, video and broadcasting equipment

### DESCRIPTION

The PS 150 series is an extremely small high quality switch, which has been designed specifically for low and medium current PCB mounted applications. The switch has a double pole single throw contact arrangement and momentary or alternate action.

### Electrical

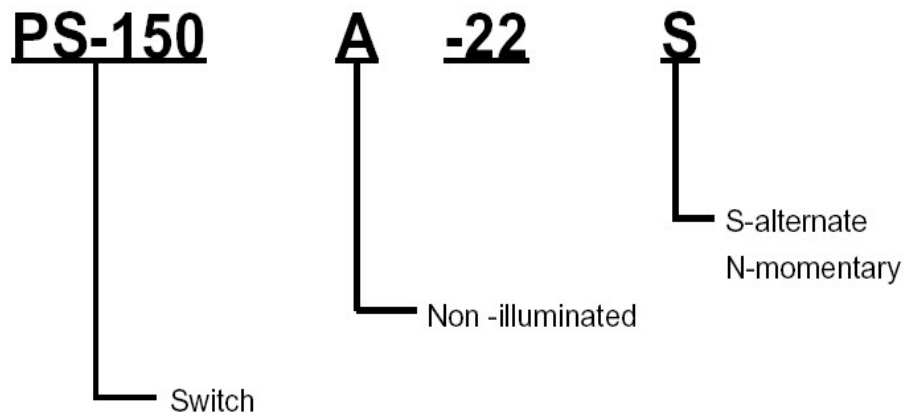
Rating	12V DC 100mA
Contact Resistance	50mΩ max
Insulation Resistance	100MΩ min @ 500V DC

### Mechanical

Operating Life	10,000 operations
----------------	-------------------

### ORDERING INFORMATION

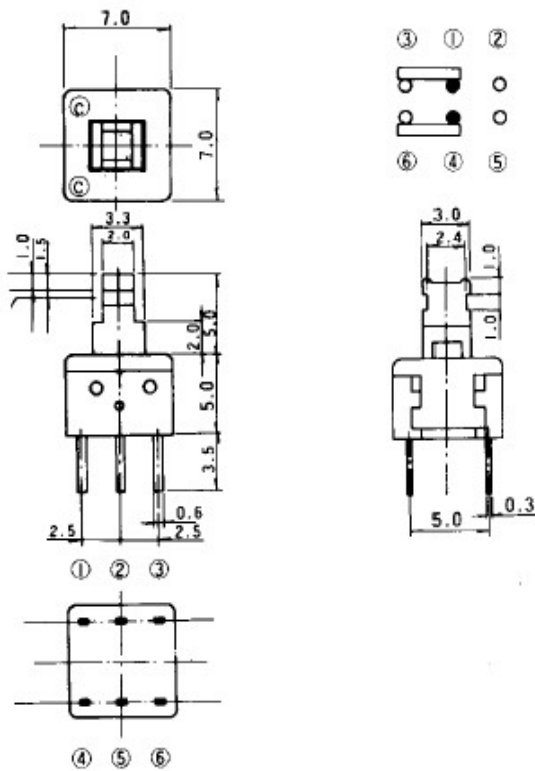
#### SPECIFICATIONS



Eg: PS 150A-22N = momentary

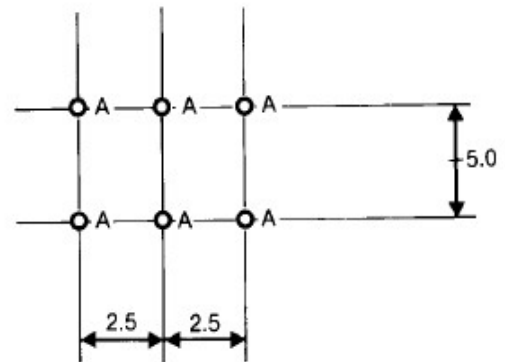
# NON ILLUMINATED SWITCHES

## Dimensions



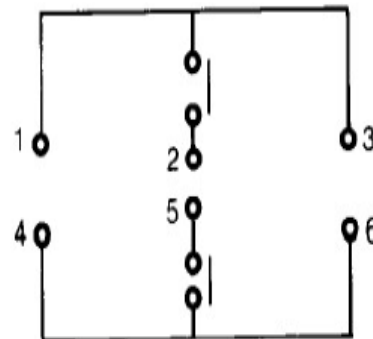
All measurements are in mm. Tolerance +/- 0.3mm unless shown. This leaflet is believed to contain the best information at time of printing, but is subject to change without notice.

## PCB drilling



Drill all holes 0.8mm $\phi$   
Pad size 2.0mm

## Circuit diagram



Devlin Electronics Limited, Unit D1, Grafton Way, Basingstoke, Hants, RG22 6HZ, England

Telephone 01256 467367 email [sales@devlincomponents.co.uk](mailto:sales@devlincomponents.co.uk) Website [www.devlincomponents.co.uk](http://www.devlincomponents.co.uk)